

See discussions, stats, and author profiles for this publication at: <https://www.researchgate.net/publication/337725217>

Advanced Burkitt Lymphoma in Sub-Saharan Africa Pediatric Units: Results of the Third Prospective Multicenter Study of the Groupe Franco-Africain d'Oncologie Pédiatrique

Article in *Journal of Global Oncology* · November 2019

DOI: 10.1200/JGO.19.00172

CITATIONS

19

READS

99

10 authors, including:



Bouda Gabrielle Chantal

centre hospitalier universitaire yalgado ouédraogo

6 PUBLICATIONS 26 CITATIONS

[SEE PROFILE](#)



Marie-Anne Raquin

Institut de Cancérologie Gustave Roussy

71 PUBLICATIONS 4,017 CITATIONS

[SEE PROFILE](#)



Koffi Mawuse Guedenon

Université de Lomé, Togo

30 PUBLICATIONS 101 CITATIONS

[SEE PROFILE](#)



Claude Moreira

Cheikh Anta Diop University, Dakar

124 PUBLICATIONS 790 CITATIONS

[SEE PROFILE](#)

Some of the authors of this publication are also working on these related projects:



Global Retinoblastoma Presentation 2017 [View project](#)



Global Retinoblastoma Presentation 2017 [View project](#)

Advanced Burkitt Lymphoma in Sub-Saharan Africa Pediatric Units: Results of the Third Prospective Multicenter Study of the Groupe Franco-Africain d'Oncologie Pédiatrique

Gabrielle C. Bouda, MD¹; Fousseyni Traoré, MD²; Line Couitchere, MD³; Marie-Anne Raquin, MD⁴; Koffi M. Guedenon, MD⁵; Angele Pondy, MD⁶; Claude Moreira, MD⁷; Mbola Rakotomahefa, MD⁸; Mhamed Harif, MD⁹; and Catherine Patte, MD⁴

PURPOSE To evaluate the results of an intensive polychemotherapy regimen for Burkitt lymphoma (BL) in sub-Saharan African pediatric centers.

PATIENTS AND METHODS Children with advanced-stage BL (stages II bulky, III, and IV) treated with the GFAOP–Lymphomes Malins B (GFALMB) 2009 protocol in 7 centers between April 2009 and September 2015 were prospectively registered. Treatment regimen contained a prephase with cyclophosphamide followed by 2 induction courses (cyclophosphamide, vincristine, prednisone, high-dose methotrexate [HDMTX]), 2 consolidation courses (cytarabine, HDMTX), and a maintenance phase only for stage IV. HDMTX was given at the dose of 3 g/m².

RESULTS Four hundred patients were analyzed: 7% had stage II bulky, 76% stage III, and 17% stage IV disease. Median age was 7.3 years, and sex ratio was 1.9:1 (male:female). A total of 221 patients received the whole protocol treatment and 195 achieved complete remission (CR), 11 of them after a second-line treatment. Treatment abandonment rate was 22%. One hundred twenty-five patients died, of whom 49 deaths were related to treatment toxicity. A total of 275 patients are alive, including 25 despite treatment abandonment, but only 110 are known to be in CR with a follow-up > 1 year, indicating a high rate of loss to follow-up. Twelve-month overall survival (OS) was 60% (95% CI, 54% to 66%) and 63%, 60%, and 31%, respectively, for stage II bulky, III, and IV. Patients with stage III disease who started second induction course within 34 days had OS of 76%, versus 57% ($P = .0062$) beyond 34 days.

CONCLUSION The GFA-LMB2009 protocol improved patients' survival. Early dose intensity of treatment is a strong prognostic factor. Improving supportive care and decreasing loss to follow-up are crucial.

J Global Oncol. © 2019 by American Society of Clinical Oncology

Licensed under the Creative Commons Attribution 4.0 License 

INTRODUCTION

Burkitt Lymphoma (BL) is the most frequent non-Hodgkin lymphoma (NHL) in children and accounts for 50%-60% of childhood NHL. It is endemic in the area known as the Burkitt belt, where it represents > 50% of childhood cancers in sub-Saharan Africa.¹⁻³ BL is characterized by very rapid progression, with a tendency to early invasion of the CNS and the bone marrow (BM). More than two-thirds of the patients are diagnosed at advanced stages of the disease.⁴⁻⁸

Major advances in the management of childhood B-cell NHL were made in recent years thanks to national and international collaborations. Most of the current treatment protocols are derived from the Lymphomes Malins B (LMB) protocols designed by the Société Française d'Oncologie Pédiatrique (SFOP) or the Berlin-Frankfurt-Münster protocols of the German-Austrian group. Overall survival (OS) rate increased

from 30% in the 1970s to 90% in the 1990s in developed countries through consecutive prospective studies. The identification of clinical and biologic factors and the initial response to treatment have led to stratification into therapeutic groups.⁹⁻¹⁶ An intensive pulse polychemotherapy of 1 to 6 months with the shortest intervals between courses and CNS prophylaxis is essential. Cyclophosphamide, high-dose methotrexate (HDMTX) and cytarabine (high dose [HD] in advanced diseases) appear as major drugs, to which are added vincristine, doxorubicin, etoposide, and corticosteroids.^{3,9-17} The improvements in supportive care and team experience led to a gradual reduction in toxic death rate from 10% to < 1% in 10 years.⁹⁻¹³ Medium- and long-term cardiac and gonadal toxicity and secondary cancer risk decreased because of all these adaptations.^{9,14,16}

In developing countries, health infrastructures are insufficient and inadequate for cancer care. Access to

Author affiliations and support information (if applicable) appear at the end of this article.

Accepted on October 1, 2019 and published at ascopubs.org/journal/jgo on December 3, 2019; DOI <https://doi.org/10.1200/JGO.19.00172>

CONTEXT

Key Objective

Advanced stage Burkitt lymphomas need a short (a few months) but intensive polychemotherapy to be cured. The Groupe Franco-Africain d'Oncologie Pédiatrique developed in 7 sub-Saharan units the GFA-LMB2009, a protocol based on the Lymphomes Malins B regimen without doxorubicin. High-dose methotrexate, 3 g/m², was administered with alkaline hyperhydration and folinic acid rescue 24 hours later, without methotrexate level measurements.

Knowledge Generated

The overall survival was 60% at 1 year (n = 400). Patients with stage III disease who started second induction course within 34 days (n = 123) had overall survival of 76%, versus 57% (*P* = .0062) for those who started beyond 34 days (n = 124). This demonstrates the importance of the early dose intensity.

Relevance

This study indicates that, despite many difficulties, a significant percentage of children with Burkitt lymphoma can be cured in sub-Saharan countries. It is necessary to improve supportive care and to reduce treatment abandonment and loss to follow-up.

care for the population remains limited geographically and financially, which generates diagnostic delays and abandonment.^{18,19} Moreover, human expertise is often lacking, making the application of reference protocols difficult. In the Groupe Franco-Africain d'Oncologie Pédiatrique (GFAOP), two previous studies on the treatment of BL were carried out,^{4,5} thanks to the gained experience and improved patient management of these study teams. This third multicenter study, named GFAOP–Lymphomes Malins B (GFA-LMB) 2009, was initiated in sub-Saharan units to continue to improve

survival of patients with advanced-stage disease, while taking into account local conditions.

PATIENTS AND METHODS

This is a prospective study carried out from April 2009 to September 2015. Some units joined during the study.

The protocol was reviewed and approved by the GFAOP board. Each unit was committed to present the protocol to their institution in accordance with ethics standards for research in the country.

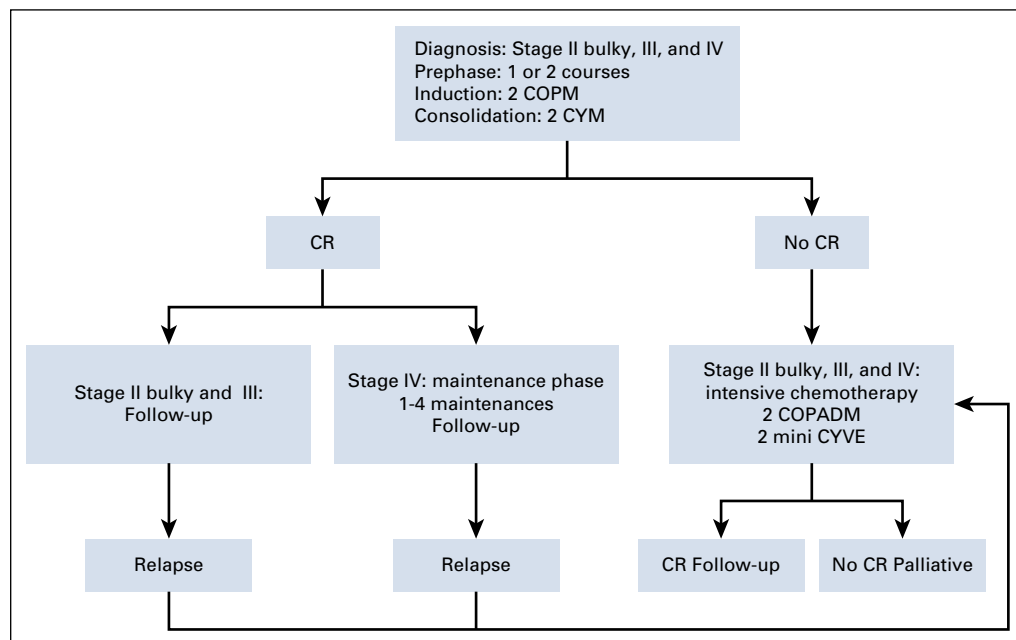


FIG 1. Protocol strategy. COPM, cyclophosphamide, vincristine, prednisone, high-dose methotrexate; COPADM, addition of doxorubicin (adriamycin) to COPM; CR, complete remission; CYM, cytarabine, high-dose methotrexate; CYVE, HD cytarabine, vepeside (VP16).

TABLE 1. GFA-LMB2009 Treatment Courses

Regimen	Dose	Administration	Days
Prephase			
CMP	500 mg/m ²	IV	1
MTX + HC	15 mg each	IT	1
Repeat course at day 8 if necessary			
Induction phase: COPM 1 and 2: started 1 wk after the prephase			
VCR	1.5 mg/m ² (max 2 mg)	IV	1
CPM	500 mg/m ² /d	IV (in 2 fractions)	2, 3, 4
HDMTX	3 g/m ²	IV in 3-h infusion	1
Folinic acid	15 mg/m ² every 6 h	PO or IV (12 doses)	2, 3, 4
Pred	60 mg/m ² /day	IV or PO	1-7
MTX + HC	15 mg each	IT	2, 6
Consolidation phase: CYM 1 and 2			
HDMTX	3 g/m ²	IV in 3-h infusion	1
Folinic acid	15 mg/m ² every 6 h	PO or IV (12 doses)	2, 3, 4
Ara C	100 mg/m ² /day	SC (in 2 fractions)	2-6
MTX + HC	15 mg each	IT	2
Ara-C + HC	30 mg + 15 mg	IT	7
Maintenance phase for stage IV: monthly alternating courses			
m1			
VCR	2 mg/m ² (max 2 mg)	IV	1
CPM	500 mg/m ² /day	IV (in 2 fractions)	2, 3
ADR	60 mg/m ²	IV 1 h	2
HDMTX	3 g/m ²	IV 4 h	1
Folinic acid	15 mg/m ² every 6 h	PO or IV (12 doses)	2, 3, 4
Pred	60 mg/m ² /day	PO	1-7
MTX + HC + Ara-C	15 mg + 15 mg + 30 mg	IT	2
m2 and m4			
Ara-C	100 mg/m ² /day	SC (in 2 fractions)	1-5
VP16	150 mg/m ² /day	IV 90 min	1, 2, 3
m3			
VCR	2 mg/m ² (max 2 mg)	IV	1
CPM	500 mg/m ² /day	IV (in 2 fractions)	1, 2
ADR	60 mg/m ²	IV 1 h	1
Pred	60 mg/m ² /day	PO	1-7

NOTE. COPM2, CYM1, and CYM2 were started as soon as possible when absolute neutrophils count > 1,000 or 500 in ascending phase and platelets were > 100,000 between day 15 and day 21. In case of failure, more intensive chemotherapy was proposed. Dose of each IT drug must be adapted when age < 3 years.

Abbreviations: ADR, doxorubicin (adriamycin); Ara-C, cytarabine; COPM, cyclophosphamide, vincristine, prednisone, and HDMTX; CPM, cyclophosphamide; CR, complete remission; max, maximum dose by injection; CYM, cytarabine, HDMTX; HC, hydrocortisone; HDMTX, high-dose MTX; IT, intrathecal; IV, intravenous; MTX, methotrexate; PO, orally; pred, prednisone; SC, subcutaneously; VCR, vincristine; VP16, etoposide.

Eligibility

All patients ≤ 18 years old with BL were registered in the database. Children with stage III and IV disease without CNS involvement and with < 70% blasts in BM were eligible for the study. However, some patients with > 70% blasts in BM and/or CNS disease were included by medical

decision. In November 2012, patients with stage II bulky disease were also included. Criteria of exclusion were: terminal disease at presentation, HIV positivity, prior chemotherapy, intensive or prolonged corticosteroid treatment, and socioeconomic conditions considered incompatible with the treatment. Families had to pay for their child's care,

except for drugs sent by GFAOP. Parents had to give consent to participate to the study.

Diagnosis and Staging

Diagnosis was made by cytology using fine-needle aspiration of the tumor or a pathologic fluid (pleural, ascites) and/or histopathology. Immunohistochemistry was not available and not performed. Mandatory investigations included clinical examination, abdominal ultrasound and chest x-ray, CBC count, BM aspiration, CSF direct analysis, serum chemistry, and HIV serology. Hepatitis B serology was recommended. A computed tomography scan was sometimes performed. Murphy classification was used for staging classification.²⁰ Stage II disease was also subdivided into nonbulky and bulky, defined as maxillofacial stage II with the presence of one of the criteria: tumor diameter > 7.5 cm, orbital lesion, > 3 affected regions, or lactate dehydrogenase greater than the twice normal value.

Chemotherapy Regimen

The GFA-LMB2009 protocol was a polychemotherapy regimen based on the LMB group B scheme without doxorubicin in the induction phase (Fig 1, Table 1).^{12,16} The prephase consisted of 1 or 2 courses of cyclophosphamide and intrathecal injection, at 1-week intervals. In the 2 induction courses of COPM (cyclophosphamide, vincristine, prednisone, HDMTX) and in the 2 consolidation courses of CYM (cytarabine, HDMTX), HDMTX was administered at 3 g/m² in 3 hours followed by 12 injections of folinic acid rescue starting 24 hours later. There were 2 intrathecal injections per course. A maintenance phase with 1-4 sequences was planned for stage IV disease. In case of failure (partial remission, tumor progression, or stable tumor), more intensive chemotherapy was recommended, including doxorubicin (COPM course; including doxorubicin [adriamycin] in COPADM), HD cytarabine (CY), and etoposide (vepeside [VE] at reduce dose [mini-CYVE courses])²¹ when supportive care could be ensured.

Supportive Care

Patients were systematically treated for parasites according to the local ecosystem by albendazole and/or metronidazole. Recommendation for prevention/treatment of tumor lysis syndrome (TLS) was detailed in the protocol using alkaline hydration and allopurinol. Nutritional support was given, and the infected patients were treated with antibiotics and/or antifungals according to the case. Transfusion was recommended when hemoglobin level was < 7 g/dL, or in case of clinical intolerance, and when platelet count was < 20 10⁹/L, or in case of a hemorrhagic syndrome.

Response Criteria

Patients were evaluated clinically after each course. Complete remission (CR) had to be obtained after

consolidation. CR was defined as disappearance of all tumor masses confirmed at clinical examination, x-ray, and ultrasound. In patients with initial BM or CNS involvement, examination of BM smear or CSF was performed to confirm CR. Patients in clinical CR were considered in CR even with a small residual mass stable on imaging. In case of residual masses > 5 cm, removal was recommended for histology examination to confirm remission or not.

Statistical Method

Data were collected in each unit, recorded, transmitted, and centralized in a common database in Gustave Roussy for analysis. Overall survival (OS) was defined from the first day of chemotherapy to death or last follow-up and was estimated using the Kaplan-Meier method.²² Patients lost to follow-up on progression were considered as dead.

RESULTS

Of the 562 patients registered in the database during the 6.5 years of the study, 162 were not eligible: stage IV CNS positive or with BM involvement > 70% (25%), bad nutritional status and/or socioeconomic conditions (20%), prior treatment (17%), death before treatment (15%), refusal (15%), no confirmation of the diagnosis (5%), HIV infection (3%). The 400 eligible patients were treated in 7 sub-Saharan African centers: 5 in West Africa (Abidjan, n = 71; Bamako, n = 125; Dakar, n = 15; Lomé, n = 15; Ouagadougou, n = 146), 1 in Central Africa (Yaoundé, n = 26), and 1 in Madagascar (Antananarivo, n = 2).

Patient Characteristics

Median age was 7.3 years (8 months to 18 years) with a sex ratio of 1.9:1 (male:female). Median number of siblings was 4 (0-11). Socioeconomic level was low in 90% and middle in 10% of the families. A total of 75% of the fathers and 85% of the mothers were illiterate. Median distance to reach the unit was 185 km (1-3,000 km). The possibility of housing near the unit was mentioned by 55% of the families.

Diagnosis was based on cytology in 91% of cases, pathology in 6%, and both in 3%. Tumor sites and stages are presented in Table 2. Diagnosis of NHL without precision was reported for 25% of patients. They were included in the study on the probability of BL because of epidemiology and tumor site. BM aspiration was performed in 337 (84%) patients. Thirty-four patients had CNS involvement, and 8 had Burkitt leukemia with blasts > 70%. They should have been excluded and treated more intensively but were treated according to the GFA-LMB2009 protocol; their results are presented.

Treatment and Outcome

Of the 400 patients, 231 (58%) patients received the complete treatment, whereas it was interrupted for 169 (42%; Table 2). A first complete remission (CR1) was observed in 195 patients (49%). Thirty-seven (19%)

TABLE 2. Initial Tumor Sites, Treatment Completion, and Outcome According to Stage

Site, Treatment, or Outcome	Stage II Bulky (n = 26; 7%)	Stage III (n = 304; 76%)	Stage IV (n = 70; 17%)	Total (N = 400)
Primary sites				
Abdomen		121	20	141
Head and neck	26 (9*)		14	40
Abdomen, head and neck		151	35	186
Abdomen and pleural		19		19
Lymph nodes		6		6
Testicular		2		2
Other sites		5	1	6
BM			36	36
CNS			29	29
CNS and bone marrow			5	5
Treatment				
Complete treatment	15	177	39	231 (58%)
Treatment interrupted	11	127	31	169 (42%)
CR	15 (1†)	159 (7†)	21 (3†)	195 (49%) (11†)
Treatment abandonment	7	62	21	90 (22%)
Outcome				
All death	7‡	93	25	125
Toxic death during initial treatment	3	37	9	49
Death after progression/relapse	2	55	16	73
Death from unknown cause	2	1	0	3
Alive	19 (2§)	211	45	275
Alive > 1 year	5 (1§) (1†)	105 (17§) (2†)	0	110 (18§) (3†)

NOTE. Data presented as No. unless otherwise indicated.

Abbreviations: BM, bone marrow; CR, complete remission.

*Patients with orbital involvement.

†Patients in second CR.

‡One death after 2-year follow-up of unknown cause.

§Patients in first CR despite treatment abandonment and with no other treatment.

patients relapsed (32 locally and 5 in BM and/or CNS) and 31 received second-line chemotherapy, with 11 second complete remissions (CR2).

The interruption of treatment was linked to abandonment for 90 patients (22%), change for more intensive treatment because of insufficient response for 19, and deaths for 60

TABLE 3. Main Grade 3-4 Adverse Events Among Patients With Stage III Disease During Initial Treatment

Adverse Event (%)	Prephase* (n = 424)	COPM × 2 Courses (n = 539)	CYM × 2 Courses (n = 372)
Febrile neutropenia	10	15	4
Documented infection	< 2	3	3
GI disorders including mucositis	3	11	5.3
Hb < 7 g/100 ml	6	5	7
RBC transfusion, No. (%)	1†	5 (0.9)	3 (0.8)
Platelet transfusion, No. (%)		3 (0.5)	2 (0.5)
Toxic deaths, No. (%)	6† (1.6)	20 (3.7)	3 (0.8)

NOTE. Deaths (n = 8) after intensification are not in this table.

Abbreviations: COPM, cyclophosphamide, vincristine, prednisone, high-dose methotrexate; CYM, cytarabine, high-dose methotrexate.

*A total of 120 patients had a second cyclophosphamide prephase.

†The patient received a transfusion and died of malaria crisis.

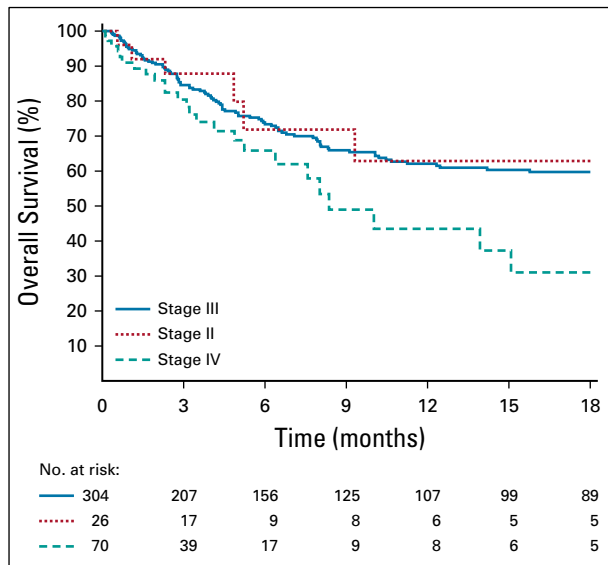


FIG 2. One-year overall survival of all patients according to stage.

others. Among those who abandoned treatment, 25 patients (2 stage II, 23 stage III) were and remained in CR, and 7 patients achieved CR with another treatment (6 stage III and 1 stage IV).

A total of 125 (31%) deaths were reported. Initial treatment-related deaths included 49 patients (12%), occurring during prephase (9), COPM (29), and CYM (3) courses and treatment intensification (8); some deaths occurred while the tumor was not controlled. Seventy-three patients (18%) died as a result of a tumor and 3 from undetermined causes.

Main treatment-related toxicities of stage III are detailed in Table 3. Any grade 3 or 4 toxicity occurred in 35% of patients during the prephase, in 37% during induction phase, and in 18% during consolidation phase. Only 2 cases of TLS are reported; both patients died.

One-year OS of all patients was 60% (95% CI, 54% to 66%) and, respectively, 63% (95% CI, 37% to 83%) in patients with stage II bulky disease, 60% (95% CI, 53% to 66%) in patients with stage III disease, and 31% (95% CI, 16% to 52%) in patients with stage IV disease (Fig 2). Among the 270 patients alive without tumor progression at last evaluation, only 110 were alive in CR with a follow-up > 1 year, including 18 who abandoned treatment.

We focused on patients with stage III disease, who represented 76% of the population. There was no statistical difference in OS whether patients were treated before or after April 2012 ($P = .3$).

For the 247 patients who finished induction treatment, dose intensity was measured by the interval between start of treatment and start of the second induction course (COPM2). Median interval was 34 days. OS was significantly different ($P = .0062$) if patients started COPM2

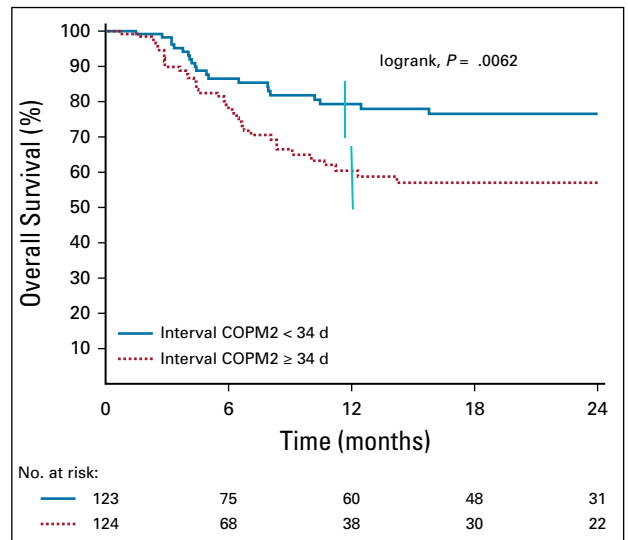


FIG 3. One-year overall survival of patients with stage III disease according to the interval between start of treatment and start of second induction course (COPM2). Vertical bars denote 95% CI of the of the actuarial rates.

before versus later than 34 days: 76% versus 56%, respectively (Fig 3). For the 116 patients who received COPM2 after 34 days, the reason for delay > 34 days, known in 66 of 116 patients (57%), was infection or febrile neutropenia in only half of them.

DISCUSSION

This third study of the GFAOP is the first to our knowledge that concerned 7 centers in sub-Saharan Africa and with such a high number of included patients (400). The 1-year survival rate of 60% for all the patients is encouraging, knowing that the experience of the teams was not equal in terms of seniority and that local realities were not similar, with very recent structuring of childhood cancer care in some countries.

During the 3 GFAOP studies, the number of patients treated in the sub-Saharan units increased, especially that of patients with stage III disease, who represent the majority of patients with BL (76% in the current study). In the first GFA study (2001-2004),⁴ in which most patients were from North African units, 3 sub-Saharan units enrolled 55 patients with stage III disease, whose OS was 44% (95% CI, 28% to 62%). In the second GFAOP study (2005-2009), exploring the possibility of curing patients with cyclophosphamide monotherapy,²³ 6 sub-Saharan units participated. The 18-month OS of the 128 patients with stage III disease was only 30% using cyclophosphamide alone and 43% (95% CI, 34% to 54%) using the second-line treatment.⁵ In this third study, 304 patients with stage III disease from 7 sub-Saharan units were treated, whose survival was 60% (95% CI, 53% to 66%). Parallel to this increase in participation, it seems that survival improved, although this is difficult to demonstrate. Despite a trend toward better outcome, there was no significant difference

in survival between the first and second periods of the current study (56% before April 2012 v 68% after; $P = .3$). This might be linked to the diverse experiences of the teams and the gradual recruitment in the study of new centers not yet accustomed to the protocol.

The association of cyclophosphamide, vincristine, prednisone, and MTX is widely used in childhood B-NHL, although the dose of each drug, especially MTX, differed among the treatment protocols. Generally in the regimen called COMP, MTX doses are between 30 mg/m² and 300 mg/m².²⁴ In this study, GFA-LMB2009, in which courses are called COPM, MTX was administered at the dose of 3 g/m² to ensure CNS prophylaxis and better systemic diffusion. This HD was feasible despite no MTX level measurement but required hyperhydration, administration of folinic acid rescue, and alkaline urine output surveillance by a trained nursing team. The common point of these protocols is the improvement of survival rates between 50% and 76.5% versus a maximum survival of 50% for monotherapies.^{4,5,7,8,25-29}

The recommended interval between start of treatment and COPM2 was 25 or 32 days, depending on whether the patient received one or two prephase courses. In reality, the interval ranged from 29 to 41 days (median, 34 days). A significant difference in survival was observed for patients with stage III disease depending on the time of administration of COPM2: 76% versus 57% when administration before or after 34 days ($P = .0062$; Fig 3). This confirms the importance of early dose intensity in the treatment of BL, as was shown by the SFOP/SFCE studies, in particular in the FAB/LMB96 study.^{2,16,26,30} For the 43% of patients who received COPM2 later than 34 days, there was no significant complication reported in the previous courses. This suggests that reduction of intervals between courses could be improved by better communication between parents and trained staff, better planning of biologic examinations, and having a reserve stock of essential drugs.

Indeed, BL is the most prevalent childhood cancer in sub-Saharan Africa.^{4,5,7,18,31} It should also be recognized that drugs used for BL are among the cheapest antineoplastic drugs. However, it does not have the same consideration as malaria, tuberculosis, or HIV.¹⁹ Initiatives like those of the GFAOP, which aim to develop protocols adapted to local conditions, must be encouraged.^{7,16,26,27} Concerning total cost of drugs, for stage III disease the Cameroon2008 protocol⁷ is 2.5 times cheaper than the GFA-LMB2009 protocol: 166 euros versus 417 (purchasing prices by GFAOP in February 2009), with similar OS rates. This must be balanced with cyclophosphamide total dose: respectively, 7.2/9 g/m² (risk 2/3: high probability of infertility) versus 3.5/4 g/m² (no risk of infertility).^{32,33}

Patients with stage II bulky disease were few ($n = 26$). Their inclusion was recent, and it was difficult to draw any conclusion.

Results in patients with stage IV disease were disappointing, with an OS of 31% and a median follow-up of only 5 months. However, it should be noted that more than half of these patients had CNS involvement (34 of 70) and/or a massive BM infiltration, which should have excluded them from the study. But the teams considered that it was not possible to give more intensive treatment similar to those that allowed an increased survival rate for patients with CNS-positive disease to 75%, while avoiding brain irradiation.^{12,14,15,21} In Davidson's trial,²⁶ survival of patients defined as group C (CNS involvement and BM infiltration > 25%) increased from 30% with COMP to 66% with LMB group C regimen (HDMTX 8 g/m², and HDCY + VP16). This confirms the necessity for more intensive chemotherapy and/or other treatment, such as immunotherapy, in higher-risk BL.^{26,27,34,35}

Toxic death, especially during the first month of treatment, is the main important problem in the management of BL.⁷ In the first GFAOP study with a majority of North African units, toxic death rate was 10.5%, with a decrease from 11.5% in the first year to 8% during the third year of the study, and it was 7.8% in the second study, with a less toxic regimen.^{4,5} In the current study, it was 12.25% (49 patients), with the majority of patients dying during prephase and induction (38 patients), which is a more toxic regimen performed in less-experienced sub-Saharan units. The majority of patients are admitted with advanced diseases requiring more intensive chemotherapy, and when disease is advanced the risk of toxic death is greater during the first phases of treatment.^{12-14,27} Improvements are possible in sub-Saharan units and require training of personnel at all levels. This will be obtained through organization of unit meetings with discussion on the causes of death and the way to avoid them. It is also a reason for adaptation of the treatment according to the local possibilities.^{19,27,36,37}

Infections and febrile neutropenia were the main adverse effects during prephase and induction in approximately 15% of cases. Eight patients with stage III disease (2.6%) received RBC transfusions, and the estimated need was 6% on average during the treatment, indicating a need for improving the supply of blood products. Of note, these infection rates and transfusion requirements are much lower than in regimens including doxorubicin. Polychemotherapy is responsible for immunosuppression and is a source of infections requiring adapted supportive care.^{4-8,12,25-27} Only 2 cases of TLS were reported. It is possible that this adverse effect was under-reported, but prephase treatment with cyclophosphamide only, associated with TLS prevention, allowed attenuation of this manifestation and its consequences before starting induction.

Treatment abandonment rate was 22% (similar in all stages), and loss to follow-up was important, since only 110 of the 275 alive patients have a follow-up > 1 year. These 2 problems still constitute major challenges for care in

Africa.¹⁸ Among the causes of abandonment, there are not only financial difficulties but also multiple social and cultural reasons that must be taken into account.³⁸ However, advances are notable despite the heterogeneity of the conditions.⁸ Cancer management is costly from all aspects. Some social and psychological assistance mechanisms to help parents confronted with this hard reality are indispensable. Some reasons for abandonment can be overcome by a better involvement of all health care providers. Greater involvement of politicians and leaders is indispensable for childhood cancer care, especially in drug distribution. An improvement in pediatric oncology management will without doubt benefit all pediatric disease.

GFAOP efforts to find effective protocols with reasonable costs are in agreement with the recommendations of

the Pediatric Oncology in Developing Countries Group, which has developed guidelines for the management of BL in resource-limited settings.³⁶ The collaboration started in sub-Saharan Africa opens the way to extend prospective studies and research.^{19,27} In addition, biologic specificities of BL may help to initiate new therapeutic strategies.^{3,39}

This trial shows that despite considerable difficulties in cancer care, especially in centers more recently opened, it is possible to cure a significant number of sub-Saharan children with BL. The GFA-LMB2009 protocol is effective for patients with stage II bulky and III BL, provided that it is applied rigorously, respecting course intervals and with improvement of supportive care.

AFFILIATIONS

¹CHU Yalgado Ouédraogo, Ouagadougou, Burkina Faso

²CHU Gabriel Touré, Bamako, Mali

³CHU de Treichville, Abidjan, Côte d'Ivoire

⁴Gustave Roussy Hospital and GFAOP Database Center, Villejuif, France

⁵CHU Sylvanus Olympio, Lomé, Togo

⁶Centre Mère-Enfant, Fondation Chantal Biya, Yaoundé, Cameroun

⁷Hôpital Aristide Le Dantec, Dakar, Sénégal

⁸HJRA, Antananarivo, Madagascar

⁹Hôpital 20 Août 1953, Casablanca, Morocco

CORRESPONDING AUTHOR

Gabrielle C. Bouda, MD, Pediatric Oncology Unit, CHU Yalgado Ouédraogo, 09 BP 1545 Ouagadougou 09, Burkina Faso; e-mail: cgbouda@yahoo.fr.

PRIOR PRESENTATION

Presented in part at the Société Internationale d'Oncologie Pédiatrique (SIOP) annual meeting, Cape Town, South Africa, October 8-11, 2015; and the SIOP Africa meeting, Marrakech, Morocco, April 5-8, 2017.

SUPPORT

Supported by Institut Gustave Roussy, Villejuif, France; Ligue Nationale Contre le Cancer, France; Société Française des Cancers de l'Enfant; Société Française de Pédiatrie; Société Internationale d'Oncologie Pédiatrique; Œuvres Hospitalières Françaises de l'Ordre de Malte, Paris, France; Fondation Sanofi-Esprit, Paris, France; Association Pathologie, Cytologie et Développement, France; and Association Lalla Salma, Rabat, Morocco.

REFERENCES

1. Patte C, Brugières L, Terrier-Lacombe MJ: Lymphomes malins non-Hodgkiniens de l'enfant, in Kalifa C, Oberlin O, Pein F, et al (eds): *Cancer de l'enfant*. Paris, France, Flammarion Médecine-Science, 2008, pp 157-168
2. Minard-Colin V, Brugières L, Reiter A, et al: Non-Hodgkin lymphoma in children and adolescents: Progress through effective collaboration, current knowledge, and challenges ahead. *J Clin Oncol* 33:2963-2974, 2015
3. Burkitt D: Determining the climatic limitations of a children's cancer common in Africa. *BMJ* 2:1019-1023, 1962
4. Harif M, Barsaoui S, Bencheikroun S, et al: Treatment of B-cell lymphoma with LMB modified protocols in Africa—Report of the French-African Pediatric Oncology Group (GFAOP). *Pediatr Blood Cancer* 50:1138-1142, 2008
5. Traoré F, Coze C, Atteby JJ, et al: Cyclophosphamide monotherapy in children with Burkitt lymphoma: A study from the French-African Pediatric Oncology Group (GFAOP). *Pediatr Blood Cancer* 56:70-76, 2011

AUTHOR CONTRIBUTIONS

Conception and design: Fousseyni Traoré, Line Couitchere, Mhamed Harif, Marie-Anne Raquin, Catherine Patte

Provision of study material or patients: Gabrielle C. Bouda, Fousseyni Traoré, Line Couitchere, Koffi M. Guedenon, Angele Pondy, Claude Moreira, Mbola Rakotomahefa

Collection and assembly of data: Gabrielle C. Bouda, Marie-Anne Raquin, Catherine Patte

Data analysis and interpretation: Gabrielle C. Bouda, Marie-Anne Raquin, Catherine Patte

Manuscript writing: All authors

Final approval of manuscript: All authors

Accountable for all aspects of the work: All authors

AUTHORS' DISCLOSURES OF POTENTIAL CONFLICTS OF INTEREST

The following represents disclosure information provided by authors of this manuscript. All relationships are considered compensated unless otherwise noted. Relationships are self-held unless noted. I = Immediate Family Member, Inst = My Institution. Relationships may not relate to the subject matter of this manuscript. For more information about ASCO's conflict of interest policy, please refer to www.asco.org/rwc or ascopubs.org/jgo/site/misc/authors.html.

Open Payments is a public database containing information reported by companies about payments made to US-licensed physicians ([Open Payments](http://OpenPayments)).

No potential conflicts of interest were reported.

ACKNOWLEDGMENT

We thank B. Mallon for her help with editing this article.

6. Depani S, Banda K, Bailey S, et al: Outcome is unchanged by adding vincristine upfront to the Malawi 28-day protocol for endemic Burkitt lymphoma. *Pediatr Blood Cancer* 62:1929-1934, 2015
7. Hesselning PB, Njume E, Kouya F, et al: The Cameroon 2008 Burkitt lymphoma protocol: Improved event-free survival with treatment adapted to disease stage and the response to induction therapy. *Pediatr Hematol Oncol* 29:119-129, 2012
8. Ngoma T, Adde M, Durosini M, et al: Treatment of Burkitt lymphoma in equatorial Africa using a simple three-drug combination followed by a salvage regimen for patients with persistent or recurrent disease. *Br J Haematol* 158:749-762, 2012
9. Patte C, Philip T, Rodary C, et al: Improved survival rate in children with stage III and IV B cell non-Hodgkin's lymphoma and leukemia using multi-agent chemotherapy: Results of a study of 114 children from the French Pediatric Oncology Society. *J Clin Oncol* 4:1219-1226, 1986
10. Patte C, Philip T, Rodary C, et al: High survival rate in advanced-stage B-cell lymphomas and leukemias without CNS involvement with a short intensive polychemotherapy: Results from the French Pediatric Oncology Society of a randomized trial of 216 children. *J Clin Oncol* 9:123-132, 1991
11. Patte C, Leverger C, Perel Y, et al: Updated results of the LMB86 protocol of the French Society of Pediatric Oncology (SFOP) for B-cell non-Hodgkin's lymphoma with CNS involvement and B ALL. *Med Pediatr Oncol* 18:397, 1990 (abstr)
12. Patte C, Auperin A, Michon J, et al: The Société Française d'Oncologie Pédiatrique LMB89 protocol: Highly effective multiagent chemotherapy tailored to the tumor burden and initial response in 561 unselected children with B-cell lymphomas and L3 leukemia. *Blood* 97:3370-3379, 2001
13. Reiter A, Schrappe M, Tiemann M, et al: Improved treatment results in childhood B-cell neoplasms with tailored intensification of therapy: A report of the Berlin-Frankfurt-Münster Group Trial NHL-BFM 90. *Blood* 94:3294-3306, 1999
14. Woessmann W, Seidemann K, Mann G, et al: The impact of the methotrexate administration schedule and dose in the treatment of children and adolescents with B-cell neoplasms: A report of the BFM Group Study NHL-BFM95. *Blood* 105:948-958, 2005
15. Cairo MS, Spoto R, Gerrard M, et al: Advanced stage, increased lactate dehydrogenase, and primary site, but not adolescent age (≥ 15 years), are associated with an increased risk of treatment failure in children and adolescents with mature B-cell non-Hodgkin's lymphoma: Results of the FAB LMB 96 study. *J Clin Oncol* 30:387-393, 2012
16. Patte C, Auperin A, Gerrard M, et al: Results of the randomized international FAB/LMB96 trial for intermediate risk B-cell non-Hodgkin lymphoma in children and adolescents: It is possible to reduce treatment for the early responding patients. *Blood* 109:2773-2780, 2007
17. Tsurusawa M, Mori T, Kikuchi A, et al: Improved treatment results of children with B-cell non-Hodgkin lymphoma: A report from the Japanese Pediatric Leukemia/Lymphoma Study Group B-NHL03 study. *Pediatr Blood Cancer* 61:1215-1221, 2014
18. Meremikwu MM, Ehiri JE, Nkanga DG, et al: Socioeconomic constraints to effective management of Burkitt's lymphoma in south-eastern Nigeria. *Trop Med Int Health* 10:92-98, 2005
19. Moormann A, Skiles JL, Otieno JA, et al.: Optimal management of endemic Burkitt lymphoma: A holistic approach mindful of limited resources. *Blood Lymphat Cancer* 4:91-99, 2014
20. Murphy SB: Classification, staging and end results of treatment of childhood non-Hodgkin's lymphomas: Dissimilarities from lymphomas in adults. *Semin Oncol* 7:332-339, 1980
21. Cairo MS, Gerrard M, Spoto R, et al: Results of a randomized international study of high-risk central nervous system B non-Hodgkin lymphoma and B acute lymphoblastic leukemia in children and adolescents. *Blood* 109:2736-2743, 2007
22. Kaplan EL, Meier P: Nonparametric estimation from incomplete observations. *J Am Stat Assoc* 53:457-481, 1958
23. Hesselning P, Broadhead R, Wright C, et al: Intravenous high frequency cyclophosphamide plus intrathecal methotrexate for endemic Burkitt lymphoma-interim results. *Pediatr Blood Cancer* 43:401, 2004
24. Anderson JR, Wilson JF, Jenkin DT, et al: Childhood non-Hodgkin's lymphoma. The results of a randomized therapeutic trial comparing a 4-drug regimen (COMP) with a 10-drug regimen (LSA2-L2). *N Engl J Med* 308:559-565, 1983
25. Hesselning P, Broadhead R, Mansvelt E, et al: The 2000 Burkitt lymphoma trial in Malawi. *Pediatr Blood Cancer* 44:245-250, 2005
26. Davidson A, Desai E, Hendricks M, et al: The evolving management of Burkitt's lymphoma at Red Cross Children's Hospital. *S Afr Med J*. 96: 950-954, 2006 (9 pt 2)
27. Belgaumi AF, Anas M, Siddiqui KS, et al: Risk-adapted stratification for optimally intensive treatment assignment of pediatric patients with non-Hodgkin lymphoma is an effective strategy in developing countries. *Pediatr Blood Cancer* 64:e26335, 2017
28. Koffi GK, Tolo A, Nanho DC, et al: Results of treatment with CMA, a low intermediate regimen, in endemic Burkitt lymphomas in sub-Saharan Africa: Experience of Côte d'Ivoire. *Int J Hematol* 91:838-843, 2010
29. Hesselning P, Molyneux E, Kamiza S, et al: Endemic Burkitt lymphoma: A 28-day treatment schedule with cyclophosphamide and intrathecal methotrexate. *Ann Trop Paediatr* 29:29-34, 2009
30. Patte C, Gerrard M, Auperin A, et al: Early treatment intensity has a major prognostic impact in the "intermediate risk" childhood and adolescent B-cell lymphoma: Results of the International FAB LMB 96 Trial. *Blood* (abstract); 102:491, 2003
31. Lemerle J: Traiter les cancers des enfants en Afrique. Management of cancer in children in Africa [in French]. *Arch Pediatr* 10:245-252, 2003 (suppl I)
32. Aubier F, Flamant F, Brauner R, et al: Male gonadal function after chemotherapy for solid tumors in childhood. *J Clin Oncol* 7:304-309, 1989
33. Servizoglou M, De Vathaire F, Oberlin O, et al: Dose-effect relationship of alkylating agents on testicular function in male survivors of childhood lymphoma. *Pediatr Hematol Oncol* 32:613-623, 2015
34. Minard-Colin V, Aupérin A, Pillon M, et al: Results of the randomized intergroup trial - Inter-B-NHL ritux 2010 - for children or adolescents with high risk B-non Hodgkin's lymphoma (B-NHL) and mature acute leukemia (B-AL): Evaluation of rituximab efficacy in addition to standard LMB chemotherapy regimen. *J Clin Oncol* 34, 2016 (suppl 15; abstr 10507)
35. Hesselning PB: High-dose intense chemotherapy in South African children with B-cell lymphoma: Morbidity, supportive measures, and outcome. *Med Pediatr Oncol* 34:143-146, 2000
36. Hesselning P, Israels T, Harif M, et al: Practical recommendations for the management of children with endemic Burkitt lymphoma (BL) in a resource limited setting. *Pediatr Blood Cancer* 60:357-362, 2013
37. Gopal S, Gross TG. How I treat Burkitt lymphoma in children, adolescents, and young adults in Sub-Saharan Africa. *Blood* 132:254-263, 2018
38. Lam C, Rossell N, Ribeiro RC: Global snapshots of treatment abandonment in children and adolescents with cancer: Social factors, implications and priorities. *J Healthcare Sci Hum* 2:81-110, 2012
39. El-Mallawany NK, Cairo MS: Advances in the diagnosis and treatment of childhood and adolescent B-cell non-Hodgkin lymphoma. *Clin Adv Hematol Oncol* 13:113-123, 2015

